



# Buildings

Building Survey solution for automatic 2D/3D/BIM creation



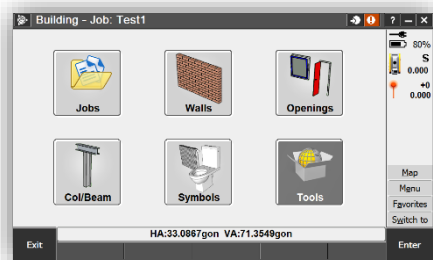
## BUILDINGS

Calvo Geospatial Consulting's Buildings is a solution for a quick and easy building survey, however adding an automatic light BIM database to enable you to create 2D plans as well as 3D / BIM building models by a mouse click.

## OPTIMIZED WORKFLOW

The software guides you to measure the needed points to define each building element such as walls, doors, windows, columns, beams, staircases, etc., in the quickest and easiest way.

Furthermore much more information is recorded inside the project which enables you to create 2D and 3D models with just a mouse click inside TBC or through an own SketchUp Plugin.

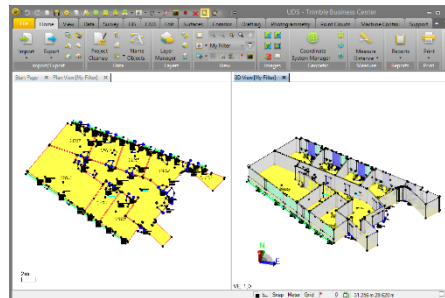


## CUSTOMIZE YOUR DELIVERABLES

Buildings has been developed to enable different outputs according to different projects' or customers' requirements.

Layers, colors, texts, symbols, annotations, etc. can be customized by editing the standard Feature Code Library (FXL file). This enables you to use different layouts for each needed output using the same software and data collection process.

Furthermore the standard SketchUp components provided with the Plugin can be edited to use your own ones respecting insertion points, etc.



## KEY FEATURES

- ⌚ Easy to use
- ⌚ Actual and known Trimble Access environment
- ⌚ No additional CAD package needed
- ⌚ Automatic 2D, 3D, and BIM modeling

## REQUIREMENTS

### Supported Controllers

- TCU-3
- Trimble M3
- TSC3
- Trimble Tablet 1 and 2
- Third Party Tablet

### Instruments:

- Any Trimble S-Series
- Trimble M3
- Any non-Trimble Instrument supported by Trimble Access

### Languages:

- English
- German
- Spanish

# FUNCTIONS

## Jobs

- Create Job
- Open Job
- Settings
- Import fixed format
- Export fixed format
- Export custom format

## Walls

- Open/Closed
- Corners/Intersection
- Completion with distance meter

## Openings

- Doors
- Windows
- Staircases

## Columns / Beams

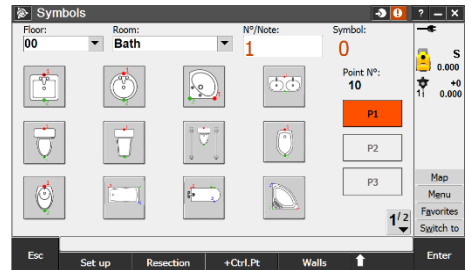
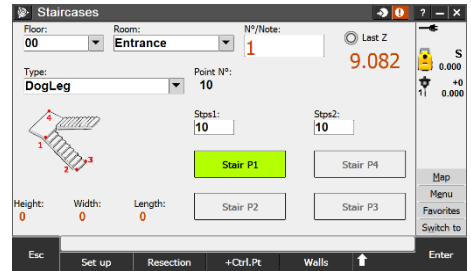
- Columns
- Beams

## Symbols

- Heating
- Symbols

## Tools

- Measure topo
- Measure codes



# DATA FLOWS

